

NUTP6 Series

12V RGB Color Changing LED Tape Light

Source: 3.5W/ft. LED
50lm/ft.

Type

Project

Catalog No.

Notes

PRODUCT DESCRIPTION

RGB LED Tape Light has the colors Red, Green, and Blue in every LED diode. Several colors of visual spectrum can be selected and programmed with a 120° viewing angle. A stationary color, automatic changing colors and brightness can be selected and changed at anytime with the press of a button. This flexible LED light source is a durable silicone encapsulated tape, cULus Listed for Damp Location applications.

FEATURES

- Available in 16' roll, 12" section, and 6" section
- Separable every 12", easily disconnected and connected without soldering
- Field cuttable every 6" or 6 LEDs
- 120° Beam Angle
- Easy to install; pre-applied 3M™ tape or 15 acrylic mounting clips (included with roll)
- Primary Colors: Red, Green, and Blue
- cULus Listed for Damp Locations
- No soldering or additional wiring is required
- No flicker delay or warm up like compact fluorescent products
- No UV light or infrared wavelengths
- 3-Year Limited Warranty

INCLUDED WITH EVERY 16' ROLL

(1) 16' Tape Light Roll with 12" separable sections, (15) Acrylic Mounting Clips with screws [NATHR-685], and (1) 12" Power Line Interconnector [NARGB-710W].

SPECIFICATION

Construction: The tape can be cut every 6" at marked intervals. Cutting does not effect circuit (shrink wrap tube included for concealment). RGB Tape Light is also separable every 12", each connection has pre-installed shrink wrap around power connections to ensure listing. Simply slice the clear shrink wrap at each electrical connection, and separate pieces. This eliminates soldering when using partial rolls.

Mounting: Each Tape Light includes pre-applied 3M™ adhesive tape for simple installation. Optional channels and clear acrylic clips are available.

Controller: Each run requires a controller or DMX decoder, which can be linked together for color synchronization. The controller can be controlled locally or with an optional hand held remote. DMX decoder requires a DMX controller (by others).

Dimming: Dimming RGB tape light is controlled by RGB controller or DMX decoder. Dimmable drivers are only for powering tape light runs.

ELECTRICAL

Input Voltage: 12V

Lumens / Wattage: 50lm / 3.5W per foot

Color Temperature: Color Changing RGB (up to 16 colors)

Dimming: Dimmable with RGB controller or DMX decoder

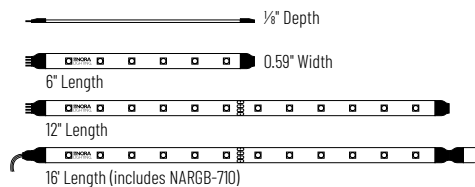
Maximum Run Length: 20'

LABELS AND LISTINGS

- cULus Listed for Damp Locations
- 3-Year Limited Warranty



PRODUCT IMAGES & DIMENSIONS



12V RGB Color Changing LED Tape Light

Length / Tape Light Finish

NUTP6-16LEDRGB = 16' Roll / Amber finish

NUTP6-LEDRGB/12 = 12" Section / Amber finish

NUTP6-LEDRGB/6 = 6" Section / Amber finish

Example: **NUTP6-16LEDRGB** = 16' 12V RGB Color Changing LED Tape Light Roll, Amber finish

NUTP6 Series

12V RGB Color Changing LED Tape Light Accessories

Type

Project

Catalog No.

Notes



RGB 2.4G Full Color RF Controller and Hand Held Remote

NARGB-860/G1

12V/24V controller is required for each RGB LED Tape Light run. Installs between the driver and the power line interconnector. The controller can be used to toggle between colors or changing modes.



RGB Controller and Hand Held Remote (sold separately)

NARGB-760 RGB Controller
NARGB-761 RGB Hand Held Remote

360W Max. A controller is required for each RGB LED Tape Light run. Installs between the driver and the power line interconnector. The controller can be used to toggle between colors or changing modes.



DMX Decoder for RGB Tape Light

NATL-DMX-4C

20A Max. A DMX decoder or RGB controller is required for each RGB LED Tape Light run. Installs between the driver and the power line interconnector. The decoder requires a DMX controller (by others) to operate.



Controller Power Line Connector

NARGB-762W 10' Cable
NARGB-763W 30' Cable

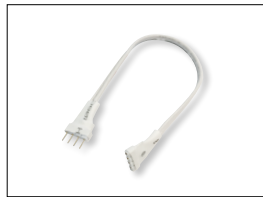
Replaces included 9-1/2" input wire, to allow for a longer length between RGB controller or DMX decoder and LED driver.



Power Line Interconnector

NARGB-710W 12" Cable

Connects a RGB Tape Light run to a RGB controller or DMX decoder. (1) Power line interconnector is included with every Tape Light roll. Use interconnection cables to increase length.



Interconnection Cables

NARGB-702W 2" Cable
NARGB-706W 6" Cable
NARGB-718W 18" Cable
NARGB-736W 36" Cable
NARGB-772W 72" Cable

Allows easy linking of two RGB Tape Lights sections. Cables are flexible and can be moved in any direction, or be joined together for custom lengths.



Splitter Cable

NARGB-700W Y Splitter
NARGB-701W X Splitter

Allows splitting the RGB Tape light from a run or driver, into two or three separate runs.



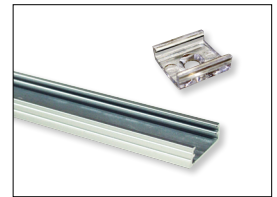
Shrink Wrap Tube / End Cap

NATL-400 Shrink Wrap Tube

Shrink wrap seals connection made in the field. Necessary to maintain cULus listing. Two shrink wrap tubes are included with every Tape Light roll and section.

NATL-403 Black
NATL-403W White

Covers open end of tape light



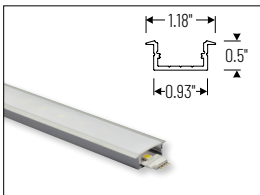
4' Channel / Clear Mounting Clips

NATHR-680 4' Channel / Aluminum

Aluminum channel is field cuttable.

NATHR-685 Clips / Pack of 15

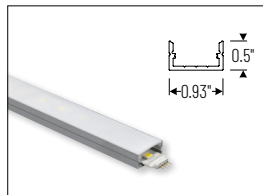
Mounts Tape Light to various surfaces. Pack of 15 clear acrylic mounting clips are included with every Tape Light roll.



4' Shallow Recessed Channel

NATL-C23A Aluminum

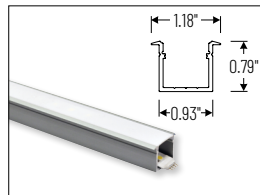
Used to mount tape light recessed in a surface. Plastic diffuser and end caps included. Field cuttable.



4' Shallow Channels

NATL-C24A Aluminum
NATL-C24B Black
NATL-C24W White

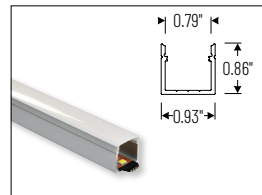
Used to mount tape light to various surfaces. Plastic diffuser and end caps included. Field cuttable.



4' Deep Recessed Channel

NATL-C25A Aluminum

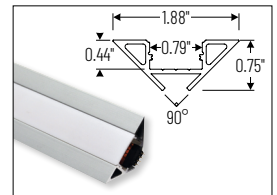
Used to mount tape light recessed in a surface. Plastic diffuser and end caps included. Field cuttable.



4' Deep Channels

NATL-C26A Aluminum
NATL-C26W White

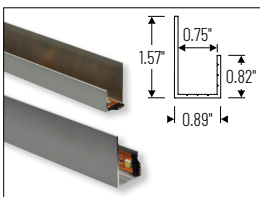
Used to mount tape light to various surfaces. Plastic diffuser and end caps included. Field cuttable.



4' Corner Channels

NATL-C28A Aluminum
NATL-C28B Black
NATL-C28W White

Plastic diffuser and End caps included. Field cuttable



4' J-Style Channel

NATL-C27A Aluminum

Used to mount tape light to various surfaces. Field cuttable.

NUTP6 Series

12V RGB Color Changing LED Tape Light Drivers & Accessories

Type

Project

Catalog No.

Notes



Direct Plug-In LED Driver

NAPK-524W/12 12V 24W

Input Voltage: 120V
Cable Length: 6 Feet



Direct Plug-In LED Driver

NAPK-560W/12 12V 60W

Input Voltage: 120V
Input Wire: 4' Cord and Plug
Output Wire: 4' Power line connector



Class II Hardwire LED Driver

NATL-5060-12-HWD10 12V 60W

Input Voltage: 120-277V
Dimming: N/A for RGB tape
Includes: 10' Power Line Connector



Class II Hardwire LED Driver

NPSU-60W/12 60W

Input Voltage: 110-277V
Dimming: N/A for RGB tape
Note: Power Line Connector not included



Class II Hardwire LED Driver

NAPKED-5040HW 12V 35W

NAPKED-5060HW 12V 60W

Input Voltage: 120V
Dimming: N/A for RGB tape
Includes: 10' Power Line Connector



Class II Hardwire LED Driver with Breakers

NMT-244/12C2D1 120V input
NMT-244/12C2D2 277V input

Input Voltage: 120V or 277V
Dimming: N/A for RGB tape
Breakers: (4) 60W
Note: Power Line Connector(s) not included



Class II Hardwire LED Driver with Regulator

NMTD-40/12D 12V 40W
NMTD-60/12D 12V 60W

Input Voltage: 120-277V
Dimming: N/A for RGB tape
Regulator: Integral regulator for constant current and voltage
Includes: 10' Power Line Connector



Power Line Connector

NATL-10 10' Power Line
NATL-30 30' Power Line

For use with Class II drivers. Carries output from driver, requires power line interconnectors.

NATL-302W 5" Splitter

Splits power line connector into two separate leads, requires power line cable.



Touch Dimmer with Memory

NATL-518W

72W max., no power fail memory, touch on/off and hold to dim.



Low Voltage Splice Box

NATL-415W

Use to join low voltage lead to power line connector.



Terminal Block

NATL-407 4-Way
2-3/8"L x 1-1/8"W x 1/8"D

NATL-408 8-Way
4"L x 1-1/8"W x 1/8"D



Wire Clip, Plastic - 10pk

NATL-404W J-Clip
NATL-405W Over the Wire
NATL-406W Square Clip



2' Wire Raceway

NATL-422B Black
NATL-422W White

Field-cutable plastic. Includes wire channel with double faced tape and cover.