

NOXAC-5631

5"/6" AC Onyx LED Retrofit Reflector

Source: 15.5W

Up to 1150lm

PRODUCT DESCRIPTION

5"/6" AC Onyx Retrofit Series requires no driver and allow for a sleek design. Spun aluminum construction provides clean sharp edges and is suitable for use with most 5" and 6" recessed housings. Deep regressed optics and round aperture deliver even and glare-free illumination.

FEATURES

- Up to 1150 delivered lumens
- 2700K, 3000K, 3500K, 4000K or 5000K @ 90+ CRI
- Dimmable AC LED
- Includes medium base socket adaptor for easy retrofitting in 5" or 6" recessed housings
- 5-year limited warranty
- ENERGY STAR certified
- Classified for wet locations

SPECIFICATION

Reflector: One piece, spun aluminum construction dissipates heat and extends life. Unitized Thermal Management, UTM, provides exceptional cool operation.

Housings: Compatible with most 5" and 6" IC and non-IC housings by Nora and others.

Mounting: Two steel, torsion mounting springs allow for easy and secure mounting in most 5" and 6" housings.

Retrofit: Luminaires include a medium base screw-socket adapter ([NRA-21ISM](#)) for retrofitting into medium base downlight housings. Intended to be used as a LED lamp replacement. GU24 socket adapter ([NRA-212SM](#)) is available.

ELECTRICAL

Input Voltage: 120V 60Hz

Lumens / Wattage: 1150lm / 15.5W

Color Temperature: 2700K, 3000K, 3500K, 4000K or 5000K

Color Rendering Index: 90+ CRI

Operating Temperature: 35°C max.

Dimming: Down to 5% with ELV or 10% with Triac

[Click Here](#) or check complete dimmer list at

www.NoraLighting.com in the "Compatibility" page under "Resources" tab

COMPATIBLE HOUSINGS

Onyx retrofits are compatible with most 5" & 6" IC and Non-IC housings by Nora and others.

Fire Box

[NFBIC-5INCATA](#)

5" ICAT Fire Box

[NFBIC-5LMRATA*](#)

5" ICAT Dedicated LED Fire Box

[NFBIC-6INCATA](#)

6" ICAT Fire Box

[NFBIC-6LMRATA*](#)

6" ICAT Dedicated LED Fire Box

New Construction

[NHIC-5LMRAT*](#)

5" ICAT Dedicated LED

[NHIC-5LMRAT/277*1](#)

5" ICAT Dedicated LED, 277V

[NHIC-527LMRAT*](#)

5" ICAT Shallow Dedicated LED

[NHIC-5010AT](#)

5" ICAT Line Voltage

[NHIC-5270AT](#)

5" ICAT Shallow Line Voltage

[NHIC-6LMRAT*](#)

6" ICAT Dedicated LED

[NHIC-6LMRAT/277*1](#)

6" ICAT Dedicated LED, 277V

[NHICCP-6LMRAT*](#)

6" Chicago Plenum Dedicated LED

[NHIC-27LMRAT*](#)

6" ICAT Shallow Dedicated LED

[NHIC-170AT](#)

6" ICAT Line Voltage

[NHIC-170NBAT](#)

6" ICAT Line Voltage (No Bracket)

[NHIC-270AT](#)

6" ICAT Shallow Line Voltage

[NH-26Q](#)

6" Line Voltage

[NHIC-6G24ATFL](#)

6" ICAT GU24

Remodel

[NHRIC-5LMRAT*](#)

5" ICAT Dedicated LED

[NHRIC-527LMRAT*](#)

5" ICAT Shallow Dedicated LED

[NHRIC-5040AT](#)

5" ICAT Line Voltage

[NHRIC-5270AT](#)

5" ICAT Shallow Line Voltage

[NHRIC-6LMRAT*](#)

6" ICAT Dedicated LED

[NHRIC-27LMRAT*](#)

6" ICAT Shallow Dedicated LED

[NHRIC-170AT](#)

6" ICAT Line Voltage

[NHRIC-170NBAT](#)

6" ICAT Line Voltage (No Bracket)

[NHRIC-270AT](#)

6" ICAT Shallow Line Voltage

[NHR-26Q](#)

6" Line Voltage

* Nora LED Dedicated housings are listed for use only with Nora LED Retrofits.

¹ Housings include a step down transformer

LABELS AND LISTINGS

- cETLus classified for Wet Locations
- ENERGY STAR certified
- [5-Year Limited Warranty](#)
- Meets ASTM-E283 Air-Tight requirements
- FCC compliant
- Certified to the high efficacy requirements of California Title 24 JA8-2022



Type

Project

Catalog No.

Notes

Performance Data

Part Number	Lumens	CCT
NOXAC-563127WW	1144lm	2700K
NOXAC-563130WW	1111lm	3000K
NOXAC-563135WW	1071lm	3500K
NOXAC-563140WW	1162lm	4000K
NOXAC-563150WW	1146lm	5000K

PRODUCT IMAGES AND DIMENSIONS



NOXAC-5631
Round Reflector



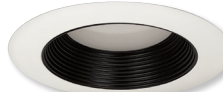
NOXAC-5631 / NOX-56REFLB
Black Reflector Insert



NOXAC-5631 / NOX-56REFLD
Diffused Clear Reflector Insert



NOXAC-5631 / NOX-56REFLHZ
Haze Reflector Insert



NOXAC-5631 / NOX-56BAFB
Black Baffle Insert



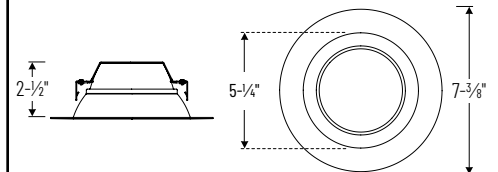
NOXAC-5631 / NOX-56BAFW
White Baffle Insert



NOXAC-5631 / NOX-56OR-W
White Oversize Ring



NOXAC-5631 / NOX-56EYELIDW
White Eyelid



5"/6" AC Onyx LED Retrofit Reflector

Color Temperature / Finish

NOXAC-563127WW/HL = 2700K / White

NOXAC-563130WW/HL = 3000K / White

NOXAC-563135WW/HL = 3500K / White

NOXAC-563140WW/HL = 4000K / White

NOXAC-563150WW/HL = 5000K / White

Optional Accessories

Description

NOX-56REFLB = 5"/6" Black Reflector Insert

NOX-56REFLD = 5"/6" Clear Diffused Reflector Insert

NOX-56REFLHZ = 5"/6" Haze Reflector Insert

NOX-56BAFB = 5"/6" Black Baffle Insert

NOX-56BAFW = 5"/6" White Baffle Insert

NOX-56EYELIDW = 5"/6" Round White Eyelid

NOX-56OR-W = 5"/6" Round White Oversize Ring

NRA-21ISM = Medium base screw-in socket (included w/ each)

NRA-212SM = Socket adapter for use with GU24 housings

Example: **NOXAC-563140WW/HL** = 5"/6" AC Onyx, Round Reflector LED Retrofit, 4000K, White Reflector / White Flange

NOXAC-5631

5"/6" AC Onyx Retrofit Reflector Accessories

Type	_____
Project	_____
Catalog No.	_____
Notes	_____



Onyx Reflector Insert

NOX-56REFLB Black
NOX-56REFLD Clear Diffused
NOX-56REFLHZ Haze
Round reflector insert is field changeable used to convert the reflector finish for NOXAC-5631.



Onyx Baffle Insert

NOX-56BAFB Black
NOX-56BAFW White
Round baffle insert is field changeable used to convert reflector (NOXAC-5631) to baffle.



Onyx Eyelid

NOX-56EYELIDW White
Round eyelid clips on reflector or baffle to convert into half moon wall wash



Onyx Oversize Ring

NOX-56OR-W White
Round oversize ring covers large ceiling cut-outs up to 8-1/4"



Medium Base Screw-In Socket

NRA-21ISM
Medium base screw-in socket adapter for retrofitting into existing medium base housings. One is included with each luminaire.



Socket Adapter for GU24 Housings

NRA-212SM
GU24 socket adapter for retrofitting into existing GU24 housings.

PHOTOMETRICS

5"/6" AC Onyx Retrofit Reflector

Type

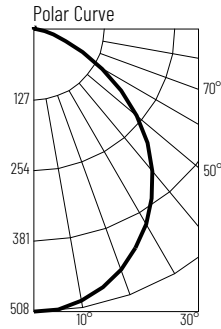
Project

Catalog No.

Notes

Test Information

Test Number: NTRI590R1
 Part Number: NOXAC-563127WW/HL
 Beam Spread: 96° Wide Flood
 Lumens: 1144lm
 Wattage: 14.92W
 Efficacy: 77lpw
 CCT / CRI: 2700K / 90 CRI
 Spacing Criteria (0°-180°): 1.2
 Spacing Criteria (90°-270°): 1.2



Illuminance at a Distance

Distance from Luminaire	FC at Nadir	Beam Diameter
4'	31.8fc	8'-10"
6'	14.1fc	13'-4"
8'	7.9fc	17'-8"
10'	5.1fc	22'-1"
12'	3.5fc	26'-6"

Zonal Lumen Summary

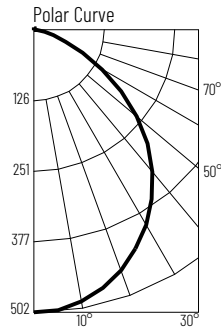
Zone	Lumens	% Luminaire
0-30	382	33.4
0-40	612	53.5
0-60	994	86.9
0-90	1132	99
90-180	12	1
0-180	1144	100

Candela Table

Vertical Angles	Candela
0	508
5	505
15	479
25	434
35	370
45	282

Test Information

Test Number: NTRI591R1
 Part Number: NOXAC-563130WW/HL
 Beam Spread: 95° Wide Flood
 Lumens: 1111lm
 Wattage: 14.66W
 Efficacy: 76lpw
 CCT / CRI: 3000K / 90 CRI
 Spacing Criteria (0°-180°): 1.18
 Spacing Criteria (90°-270°): 1.2



Illuminance at a Distance

Distance from Luminaire	FC at Nadir	Beam Diameter
4'	31.3fc	8'-8"
6'	13.9fc	13'
8'	7.8fc	17'-5"
10'	5fc	21'-8"
12'	3.5fc	26'

Zonal Lumen Summary

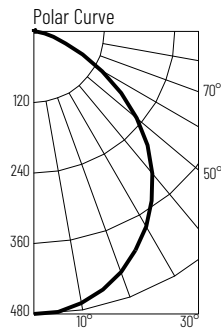
Zone	Lumens	% Luminaire
0-30	376	33.8
0-40	600	54
0-60	969	87.2
0-90	1100	99
90-180	11	1
0-180	1111	100

Candela Table

Vertical Angles	Candela
0	501
5	498
15	471
25	417
35	358
45	273

Test Information

Test Number: NTRI592R1
 Part Number: NOXAC-563135WW/HL
 Beam Spread: 97° Wide Flood
 Lumens: 1071lm
 Wattage: 15.09W
 Efficacy: 71lpw
 CCT / CRI: 3500K / 90 CRI
 Spacing Criteria (0°-180°): 1.2
 Spacing Criteria (90°-270°): 1.2



Illuminance at a Distance

Distance from Luminaire	FC at Nadir	Beam Diameter
4'	30fc	8'-8"
6'	13.3fc	13'-1"
8'	7.5fc	17'-5"
10'	4.8fc	21'-10"
12'	3.3fc	26'-2"

Zonal Lumen Summary

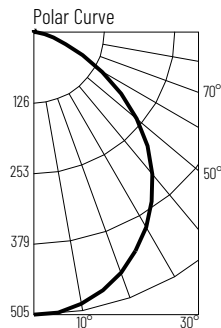
Zone	Lumens	% Luminaire
0-30	361	33.7
0-40	578	53.9
0-60	933	87.1
0-90	1060	99
90-180	11	1
0-180	1071	100

Candela Table

Vertical Angles	Candela
0	480
5	477
15	454
25	411
35	349
45	263

Test Information

Test Number: NTRI593R1
 Part Number: NOXAC-563140WW/HL
 Beam Spread: 97° Wide Flood
 Lumens: 1162lm
 Wattage: 14.63W
 Efficacy: 79lpw
 CCT / CRI: 4000K / 90 CRI
 Spacing Criteria (0°-180°): 1.2
 Spacing Criteria (90°-270°): 1.22



Illuminance at a Distance

Distance from Luminaire	FC at Nadir	Beam Diameter
4'	31.6fc	9'
6'	14fc	13'-7"
8'	7.9fc	18'-1"
10'	5.1fc	22'-7"
12'	3.5fc	27'-1"

Zonal Lumen Summary

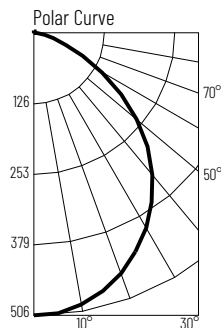
Zone	Lumens	% Luminaire
0-30	384	33
0-40	617	53.1
0-60	1009	86.8
0-90	1150	99
90-180	12	1
0-180	1162	100

Candela Table

Vertical Angles	Candela
0	505
5	502
15	477
25	435
35	373
45	287

Test Information

Test Number: NTRI780R1
 Part Number: NOXAC-563150WW/HL
 Beam Spread: 96° Wide Flood
 Lumens: 1146lm
 Wattage: 14.35W
 Efficacy: 80lpw
 CCT / CRI: 5000K / 90 CRI
 Spacing Criteria (0°-180°): 1.18
 Spacing Criteria (90°-270°): 1.2



Illuminance at a Distance

Distance from Luminaire	FC at Nadir	Beam Diameter
4'	31.6fc	8'-11"
6'	14fc	13'-4"
8'	7.9fc	17'-10"
10'	5.1fc	22'-2"
12'	3.5fc	26'-8"

Zonal Lumen Summary

Zone	Lumens	% Luminaire
0-30	381	33.2
0-40	611	53.3
0-60	998	87.1
0-90	1138	99.3
90-180	8	0.7
0-180	1146	100

Candela Table

Vertical Angles	Candela
0	505
5	500
15	474
25	429
35	364
45	281