

# NM2-2RDCS

## 2" M2 Round LED Recessed Lensed Downlight

Source: 6W, 8W or 10W LED  
400lm, 600lm or 850lm

### PRODUCT DESCRIPTION

M2 downlight series features quality and convenience with easy installation for insulated or non-insulated applications.

### FEATURES

- No housing required - IC Air-Tight rated
- Easy installation for remodel or new construction applications
- Quick disconnect allows for extended lengths
- 400lm, 600lm or 850lm LED packages
- 2700K or 3000K @ 90+ CRI
- Triac or ELV dimming
- 5-year limited warranty
- cETLus Listed for Wet Locations

### SPECIFICATION

**Construction:** Die-cast aluminum trims available in matte black or matte powder white finish. Frosted lens included with matching reflector finish as trim.

**Air Flow Restriction:** Luminaire has factory installed gasket to restrict airflow from room into ceiling plenum to <2CFM (cubic feet per minute) in accordance with ASTM-283 Air-Tight requirements.

**Clearance:** IC rated luminaires are rated for direct contact with insulation (not spray foam insulation), no minimum clearance is required.

**Junction Box:** Prewired junction box includes quick connect to LED fixtures for ease of installation. Junction box includes two (400lm/600lm) or four (850lm) ½" trade size knockouts and snap on cover with 7" quick connect wire. Luminaire includes 5" (400lm/600lm) or 4" (850lm) quick connect wire.

**Maximum length between luminaire and driver is 40'. For longer remote driver remote run length, consult factory.**

**Mounting:** No housing is required, two tensions steel spring clips secure luminaire to ceiling. Accommodates ceiling thickness up to ¾". New construction frame-in kits are available, see accessories.

ELECTRICAL	40	60	85
<b>Input Voltage</b>	120V		
<b>Input Power</b>	6W	8W	10W
<b>Color Temperature</b>	2700K or 3000K	2700K, 3000K, 4000K	2700K or 3000K
<b>CRI</b>	90+ CRI		
<b>Dimming</b>	Triac / ELV		
<b>Operating Temp.</b>	40°C max.		25°C max.
<b>Beam Spread</b>	36° Flood		
<b>Lifetime</b>	60,000 hours @ L70		

### OPTIONAL MOUNTING ACCESSORIES

- [NM2-MLS1](#): One Head Multiple Lighting System Plate
- [NM2-MLS2](#): Two Head Multiple Lighting System Plate
- [NM2-MLS3](#): Three Head Multiple Lighting System Plate
- [NF-R246](#): Universal New Construction Frame-In
- [NFC-R275](#): New Construction Frame-In with Collar
- [NM2-EW-4](#): 4' Quick Connect Linkable Extension Cable
- [NM2-EW-10](#): 10' Quick Connect Linkable Extension Cable

### LABELS AND LISTINGS

- cETLus Listed for Wet Locations
- [5-Year Limited Warranty](#)
- FCC compliant
- Certified to the high efficacy requirements of California Title 24 JA8-2022



Type \_\_\_\_\_

Project \_\_\_\_\_

Catalog No. \_\_\_\_\_

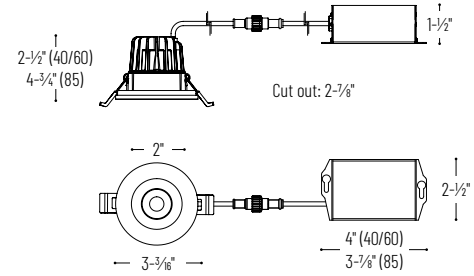
Notes \_\_\_\_\_

### PRODUCT IMAGES AND DIMENSIONS



**NM2-2RDCSXXXBB**  
400lm or 600lm  
Matte Black

**NM2-2RDCS85XXMPW**  
850lm  
Matte Powder White



### 2" M2 Round LED Recessed Lensed Downlight

Trim Type	Lumens / Wattage	Color Temperature	Finish
<b>NM2-2RDCS</b> = 2" Round Lensed Downlight	<b>40</b> = 400lm / 6W	<b>27</b> = 2700K	<b>BB</b> = Matte Black
	<b>60</b> = 600lm / 8W	<b>30</b> = 3000K	<b>MPW</b> = Matte Powder White
	<b>85</b> = 850lm / 10W		
	<b>60</b> = 600lm / 8W	<b>40</b> = 4000K	<b>MPW</b> = Matte Powder White

### Optional Mounting Accessories

Accessory Type	Finish
<b>NM2-MLS1</b> = One Head MLS Plate	<b>BB</b> = Matte Black
<b>NM2-MLS2</b> = Two Head MLS Plate	<b>MPW</b> = Matte Powder White
<b>NM2-MLS3</b> = Three Head MLS Plate	
<b>NF-R246</b> = Universal New Construction Frame-In	
<b>NFC-R275</b> = New Construction Frame-In with Collar	
<b>NM2-EW-4</b> = 4' Quick Connect Extension Cable	
<b>NM2-EW-10</b> = 10' Quick Connect Extension Cable	

Example: **NM2-2RDCS6030MPW** = 2" M2 Round LED Recessed Lensed Downlight, 600lm / 8W, 3000K, Matte Powder White

# NM2-2RDCS

2" M2 Round LED Recessed Lensed Downlight Accessories

Type \_\_\_\_\_  
 Project \_\_\_\_\_  
 Catalog No. \_\_\_\_\_  
 Notes \_\_\_\_\_



One Head Multiple Lighting System Plate

**NM2-MLS1B** 1 Head / Matte Black  
**NM2-MLS1PW** 1 Head / Matte Powder White  
 Converts one round LED luminaire into multiple lighting system without a large housing.



Two Head Multiple Lighting System Plate

**NM2-MLS2B** 2 Head / Matte Black  
**NM2-MLS2MPW** 2 Head / Matte Powder White  
 Converts two round LED luminaires into multiple lighting system without a large housing.



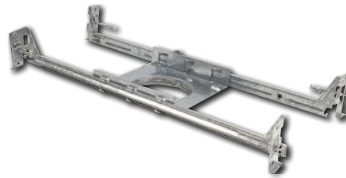
Three Head Multiple Lighting System Plate

**NM2-MLS3B** 3 Head / Matte Black  
**NM2-MLS3MPW** 3 Head / Matte Powder White  
 Converts three round LED luminaires into multiple lighting system without a large housing.



Universal New Construction Frame-In

**NF-R246**  
 Universal new construction frame-in can be used to assist installing can-less recessed downlighting.



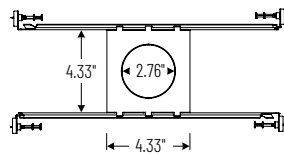
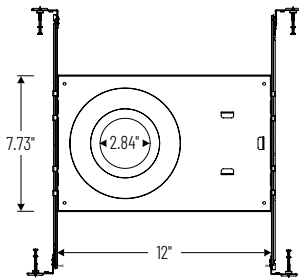
New Construction Frame-In with Collar

**NFC-R275**  
 New construction frame-in can be used to assist installing can-less recessed downlighting.



Quick Connect Extension Linkable Cables

**NM2-EW-4** 4' Cable  
**NM2-EW-10** 10' Cable  
 Use to extend the length between luminaire and driver enclosure. Can be connected together to create custom lengths. Maximum length between luminaire and driver is 40'. For longer remote driver remote run length, consult factory.



# PHOTOMETRICS

## 2" M2 Round LED Recessed Lensed Downlight

Type

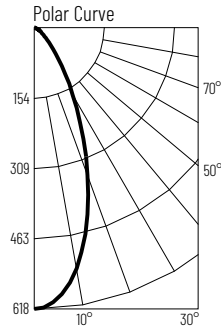
Project

Catalog No.

Notes

### Test Information

Test Number: NTR1506  
 Part Number: NM2-2RD4CS4030MPW  
 Beam Spread: 44° Flood  
 Lumens: 450lm  
 Wattage: 7.08W  
 Efficacy: 63lpw  
 CCT / CRI: 3000K / 90 CRI  
 Spacing Criteria (0°-180°): 0.7  
 Spacing Criteria (90°-270°): 0.7



### Illuminance at a Distance

Distance from Luminaire	FC at Nadir	Beam Diameter
2'	154fc	1'-7"
4'	38.6fc	3'-2"
6'	17.2fc	4'-10"
8'	9.7fc	6'-5"
10'	6.2fc	8'

### Zonal Lumen Summary

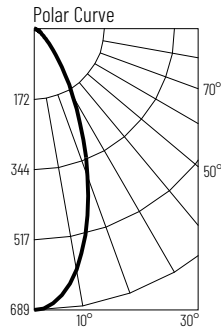
Zone	Lumens	% Luminaire
0-30	293	65.1
0-40	366	81.3
0-60	427	95
0-90	449	99.9
90-180	0	0.1
0-180	450	100

### Candela Table

Vertical Angles	Candela
0	618
5	596
15	446
25	249
35	114
45	50

### Test Information

Test Number: NTR1505  
 Part Number: NM2-2RD4CS6030MPW  
 Beam Spread: 44° Flood  
 Lumens: 505lm  
 Wattage: 8.1W  
 Efficacy: 62lpw  
 CCT / CRI: 3000K / 90 CRI  
 Spacing Criteria (0°-180°): 0.7  
 Spacing Criteria (90°-270°): 0.7



### Illuminance at a Distance

Distance from Luminaire	FC at Nadir	Beam Diameter
2'	172fc	1'-7"
4'	43.1fc	3'-2"
6'	19.1fc	4'-10"
8'	10.8fc	6'-5"
10'	6.9fc	8'

### Zonal Lumen Summary

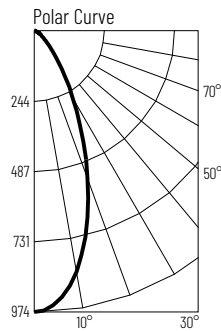
Zone	Lumens	% Luminaire
0-30	328	65
0-40	410	81.2
0-60	479	95
0-90	504	99.9
90-180	0	0.1
0-180	505	100

### Candela Table

Vertical Angles	Candela
0	689
5	666
15	501
25	280
35	129
45	57

### Test Information

Test Number: NTR1504  
 Part Number: NM2-2RD4CS8530MPW  
 Beam Spread: 44° Flood  
 Lumens: 725lm  
 Wattage: 10W  
 Efficacy: 72lpw  
 CCT / CRI: 3000K / 90 CRI  
 Spacing Criteria (0°-180°): 0.7  
 Spacing Criteria (90°-270°): 0.7



### Illuminance at a Distance

Distance from Luminaire	FC at Nadir	Beam Diameter
2'	244fc	1'-7"
4'	60.9fc	3'-2"
6'	27.1fc	4'-10"
8'	15.2fc	6'-5"
10'	9.7fc	8'-1"

### Zonal Lumen Summary

Zone	Lumens	% Luminaire
0-30	466	64.3
0-40	583	80.5
0-60	686	94.7
0-90	724	99.9
90-180	1	0.1
0-180	725	100

### Candela Table

Vertical Angles	Candela
0	974
5	945
15	710
25	396
35	184
45	84